

# NEWSLETTER



portraits

Rembrandt van Rijn  
Self-portrait (1651)

Pablo Picasso  
Self-portrait (1907)

Vincent Van Gogh  
Self-portrait (1889)

Hans Holbein the Younger  
Edward VI as a Child (1538)

James Dixon Primary  
Mona Lisa (1503-04)

a piece of artwork showing a person

a portrait that an artist creates of themselves

eyes, nose, mouth, ears

the shades of a person's skin

how an artist shows what a person is like in a portrait

how an artist shows what a person is like in a portrait

how an artist shows what a person is like in a portrait

a way of painting and drawing where artists show more than one view of something in the same picture, like looking at many sides of a cube at once

portrait

self-portrait

facial features

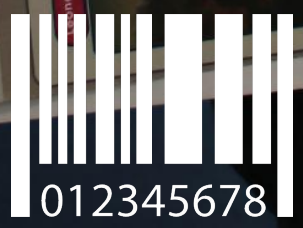
skin tone

represent

cubism

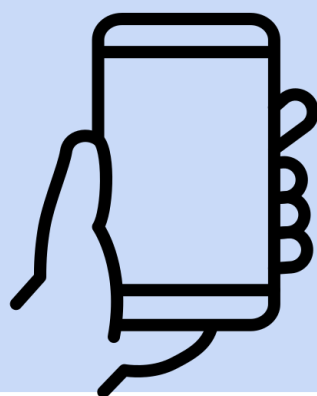
P

"You are strong, capable, and enough—just as you are."



# This Week at James Dixon

This week the DfE updated their 'Mobile Phones in Schools Guidance'. Here is a summary of our rules for the use of mobile phones:



- Mobile phones must be switched off once the pupil **enters the school grounds**.
- Upon entering the classroom, all phones must be given to a member of staff and placed within the classroom safe where they will be locked away until the end of the school day.
- At the end of the day, a member of staff will return each phone to its rightful owner.
- Mobile phones must remain switched off whilst the pupil is on the school grounds.

## Term Dates 2026



**Term Starts**

Monday 5th  
January 2026

Tuesday 14th April  
2026

Wednesday 26th  
August 2026  
**(Bank Holiday  
31st August)**

**Half Term**

Monday 16th  
February - Friday  
20th February 2026

Monday 25th May -  
Friday 29th May 2026

Monday 19th  
October - Friday  
30th October  
2026

**Term  
Finishes**

Friday 27th March  
2026 @ 2pm

Tuesday 21st July  
2026 @ 2pm

Friday 18th  
December 2026  
@2pm

**BACK BY POPULAR DEMAND....**

FUNDRAISING FOR  
JAMES DIXON PRIMARY SCHOOL



PTA  
**QUIZ**  
Night

WITH QUIZ MASTER  
MR ENTWISTLE

<b>TICKETS:</b> £6	<b>NEXT FRIDAY</b> <b>6 FEB, 2026</b>	<b>7PM -</b> <b>10PM</b>
-----------------------	--	-----------------------------

**PRIZES FOR THE TOP 3 TEAMS!**

**PRIZE FOR THE BEST TEAM NAME!**

**COME ON YOUR OWN OR IN TEAMS/ MAX 6 PER TEAM**

**EV  
ERY  
MAN**

DRINKS (WINE, BEER, SOFT DRINKS) AND  
LIGHT SNACKS AVAILABLE  
CASH AND CARD ACCEPTED

**YARD  
SALE  
PIZZA**

QR Code to BOOK:



**PHOENIX COMMUNITY CENTRE,**  
66 WESTOW ST,  
CRYSTAL PALACE , SE19 3AF

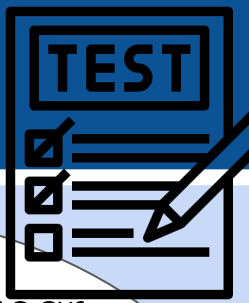
**BOOK TICKETS:**

[www.ticketsource.co.uk/](http://www.ticketsource.co.uk/)  
[james-dixon-primary-school-pta](http://james-dixon-primary-school-pta)



**JAMES DIXON PRIMARY SCHOOL**  
PARENT TEACHER ASSOCIATION

# Pupil Leadership



Hi JD! This week the year 6's are doing the MOCK SATs ! It was stressful, we've been working hard for amazing results! Practise hard and it might just surprise you.



Hey JD! This week we're starting something new! Every other week, you can find out details about one of your teachers weekend.. This week we're talking about (drumroll..) MRS SALISBURY! She went to Dublin for a reason I don't know! Have a good weekend!



Hey JD! This week Friday we are doing RE (Religious Education) on Hinduism! It's not been an easy week for year 6 with a mix of RE and SATS, it's been a busy week! Have a good weekend all!



Friday 30th January 2026

# RE Day

## HINDUISM ॐ

This term, we have been learning about Hinduism. We have been using Kagan strategies in our RE Day lessons.



Sharing ideas about Holi in Year 2.





Placemat Consensus



Naming and talking about the Hindu deities in Year 6.



Quiz, quiz, trade



 Shiva	 Rama
Known as 'The Destroyer' or 'The Transformer'. Destroys the Universe at the end of time so it can be reborn.	'The Hero' He was born as a human prince and the festival of Diwali celebrates his story. He kills a 10 headed demon king to save his wife Sita.

 Shiva	 Rama
Known as 'The Destroyer' or 'The Transformer'. Destroys the Universe at the end of time so it can be reborn.	'The Hero' He was born as a human prince and the festival of Diwali celebrates his story. He kills a 10 headed demon king to save his wife Sita.

## Big Cat Reminder

Reception, Year One and Year Two



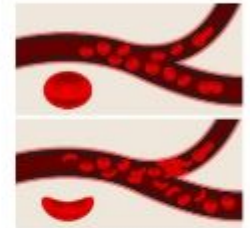
Just a reminder to get your child reading on Big Cat! Books are assigned by your teacher and just a few minutes reading a day can make a big difference! Please let your teacher know if you can't get logged in.

# Sickle Cell Awareness

**Did you know that there is a nursing support service for ALL those living with Sickle Cell Disorder who live in Bromley...**

## What is sickle cell disorder?

Sickle cell disorder is a serious condition that people are born with. It affects the red blood cells, which normally carry oxygen around the body. In sickle cell disorder, the red blood cells are shaped differently and can block blood vessels.



## **Who gets sickle cell disorder?**

Sickle cell disorder is most common in people with African or Caribbean backgrounds, but anyone can get it.

## **What are the symptoms?**

There are a few main symptoms of sickle cell disorder:

- Anaemia – Anaemia is where the haemoglobin in blood is low. Haemoglobin is the substance in red blood cells that transports oxygen around the body. This can lead to feeling tired: This is because the body isn't getting enough oxygen. In some cases, it can also bring on headaches, a rapid heartbeat, dizziness or fainting.
- Painful episodes (called *crises*): These can happen anywhere in the body and can be very severe.
- Higher risk of infections: Sickle cells can damage the spleen, which helps fight infection.

## **How common is it?**

Sickle cell disorder is the most common genetic condition in England, with around 15,000 people living with it. **South London has the highest number of people living with sickle cell disorder** with over 3,800 people living with the condition.

Bromley Healthcare provide a **Community Nursing Service** to **ALL** adult and child patients with sickle cell disorder **living in Bromley / with a Bromley GP**. Please scan the QR code for more information.



If you would like to self-refer into the service you can do so by emailing: [bromh.haemognurses@nhs.net](mailto:bromh.haemognurses@nhs.net)

There is also an Enhanced Sickle Cell Community Team offering multidisciplinary care, to find out more please scan this code.



Please note these services are for those with sickle cell disorder and **NOT** those with sickle trait / sickle carrier

# Curriculum Focus - Kagan



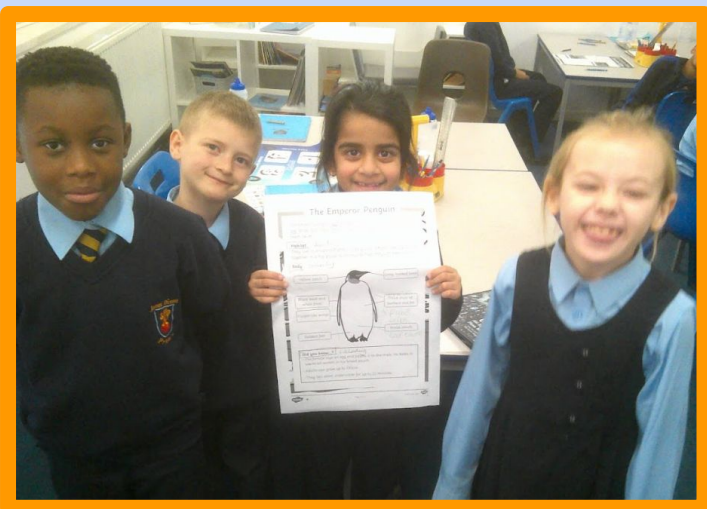
Stand-N-Share



At our school, we are always looking for innovative ways to make learning more active and collaborative. This term, we have been focusing on how Kagan Structures can support the writing process in English.



By continuing to work in structured peer interaction, our pupils are developing richer vocabularies, a deeper understanding of text features, and sharper editing skills. Have a look at some of the learning that has been taking place.





# Exciting Writing!

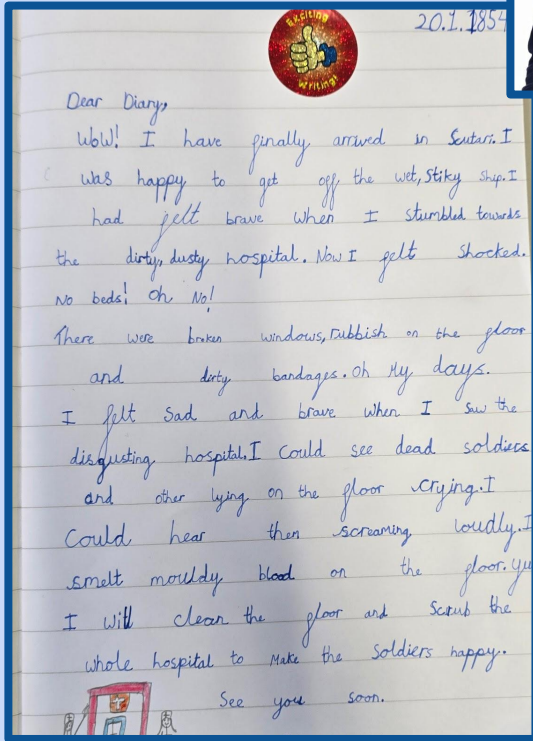


## Florence Nightingale's Diary by Mia



Dear Diary,

Wow! I have finally arrived in Scutari. I was happy to get off the wet, sticky ship. I had just felt brave when I stumbled towards the dirty, dusty hospital. Now I felt shocked. No beds! Oh no!



**'...I could hear them screaming loudly...'**

## Local Event

**Messy Church**



SCAN HERE

**CHRIST CHURCH ANERLEY  
TUESDAY 17 FEBRUARY FROM  
4 - 6PM**

**FREE CRAFTS, GAMES,  
PANCAKES, FOOD & MUSIC  
FOR AGES 4 - 11 YEAR OLDS  
CHILDREN MUST BE  
ACCOMPANIED BY AN ADULT**



# Sustainability

## How to Have a Sustainable Winter Part 3: The Big Freeze Buffet

**The Goal:** Become a lifeline for local birds and amphibians.

**The Challenge:** Set up a "Safe Hydration" station.

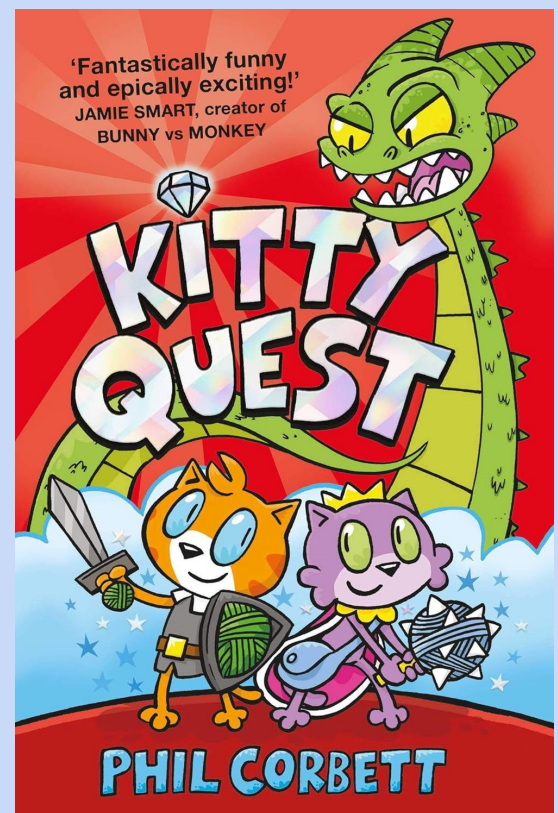
**Why it matters:** When the ground is frozen, birds can't get worms and they can't find water. A simple bird bath with a tennisball (to stop it freezing) is a life-saver.

**Action:** Put out one bowl of water and a handful of bruised fruit today.



## Book Recommendation

Kitty Quest is a delightful and humorous graphic novel series that follows a group of adventurous cats who form a questing guild. Peregrine, Clover and Bismuth, despite their varying levels of competence and a healthy dose of feline chaos, embark on missions to help the residents of their fantastical world. Filled with witty dialogue, expressive artwork, and a charming blend of fantasy and feline antics, the books explore themes of friendship and teamwork. The series is perfect for readers who enjoy lighthearted adventures with a generous helping of cat-titude.



# Composition of the Week



[Click here to listen](#)

## Friday Afternoons - Benjamin Britten

Genre: Choral

Composed in: 1933-35

*Britten composed these songs for pupils at a school where his brother was headmaster.*

*Listen out for the imitation of bird calls in **Cuckoo**, and how the same short simple tune is arranged in different ways.*

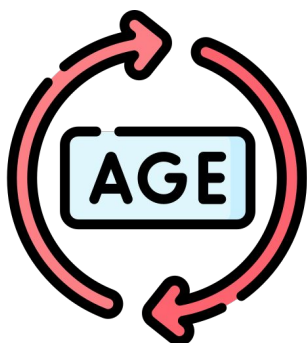
# Online Safety

## Essential Resources for Families

*Source smart, browse safe*



### ThinkUKnow



**Best For:** Age-appropriate videos and games (like Jessie & Friends) to watch with your child.

<https://www.ceopeducation.co.uk/parents/>

# Weekly Attendance

*Be here every day, all day!*

95%

Year Group	Attendance
Curious	95%
Adventurous	91%
Confident	96%
Honest	97%
Respectful	99%
Energetic	99%
Expressive	93%
Reflective	93%
Resilient	91%
Considerate	96%
Kind	96%
Capable	96%
Cooperative	99%

James Dixon  
Primary



# Next week's achievers

## Careers Curriculum

Honest

Caleb

Respectful

Albert

Energetic

Kayla

Expressive

Ivy

Reflective

Lara

Resilient

Shuayb

Considerate

Orion

Kind

Isaac

Capable

Masen

Cooperative

Runor

Colourful Class  
Star of the Week

Joshua & Briella

James Dixon  
Primary



STRENGTH THROUGH KNOWLEDGE

# Dates for your diary

<p><b><u>Mon 2nd February</u></b></p> <p><u>Year 4 to National History Museum</u></p> <p>Little Coders Yr 1-2 3.00 pm</p> <p>Mini athletics Rec-Yr 1 3.00 pm</p> <p>Nature Makers Rec-Y 1 3.00 pm</p> <p>Tennis Club Yr 1-6 3.00 pm</p> <p>Drama Club Yr 1-3 3.00 pm</p> <p>Football Club 3 pm</p>	<p><b><u>Tue 3rd February</u></b></p> <p><u>Year 6 Parents Talk 3.15 pm</u></p> <p>Mini athletics Yr 2-3 3.00 pm</p> <p>Drama Club Yr 4-6 3.00 pm</p>	<p><b><u>Wed 4th February</u></b></p> <p><u>Year 6 Penge &amp; Anerley Walk</u></p> <p><u>Year 3 to National Gallery</u></p> <p>Cheerleading Club Yr 2-6 7.45 am</p> <p>Code Camp Yr 3-6 3.00 pm</p> <p>Gymnastics Club Rec-Yr 6 3.00 pm</p>	<p><b><u>Thurs 5th February</u></b></p> <p><u>Achievers Assembly 10.15 am (invited parents only)</u></p> <p>Creative Writing Club Yr 3-6 3.00 pm</p> <p>Taekwondo Club 3.00 pm</p> <p>Steel Pan Club Yr 3-4 3.00 pm</p>	<p><b><u>Friday 6th February</u></b></p> <p><u>Maths Challenge (selected children only)</u></p> <p>Dance Club Rec-Yr 6 7.50 am</p>
<p><b><u>Mon 9th February</u></b></p> <p><b><u>Parents Evening from 3.10 pm</u></b></p> <p>Little Coders Yr 1-2 3.00 pm</p> <p>Mini athletics Rec-Yr 1 3.00 pm</p> <p>Nature Makers Rec-Y 1 3.00 pm</p> <p>Tennis Club Yr 1-6 3.00 pm</p> <p>Drama Club Yr 1-3 3.00 pm</p> <p>Football Club 3 pm</p>	<p><b><u>Tue 10th February</u></b></p> <p>Mini athletics Yr 2-3 3.00 pm</p> <p>Drama Club Yr 4-6 3.00 pm</p>	<p><b><u>Wed 11th February</u></b></p> <p><b><u>Parents Evening from 3.10 pm</u></b></p> <p>Cheerleading Club Yr 2-6 7.45 am</p> <p>Code Camp Yr 3-6 3.00 pm</p>	<p><b><u>Thurs 12th February</u></b></p> <p><b><u>Reception to Crystal Palace Park</u></b></p> <p>Creative Writing Club Yr 3-6 3.00 pm</p> <p>Taekwondo Club 3.00 pm</p> <p>Steel Pan Club Yr 3-4 3.00 pm</p>	<p><b><u>Fri 13th February</u></b></p> <p><b><u>Own clothes day</u></b></p> <p><b><u>Year 5 to Natural History Museum</u></b></p>
<p><b><u>Mon 16th February</u></b></p> <p><b><u>HALF TERM</u></b></p>	<p><b><u>Tue 17th February</u></b></p> <p><b><u>HALF TERM</u></b></p>	<p><b><u>Wed 18th February</u></b></p> <p><b><u>HALF TERM</u></b></p>	<p><b><u>Thur 19th February</u></b></p> <p><b><u>HALF TERM</u></b></p>	<p><b><u>Fri 20th February</u></b></p> <p><b><u>HALF TERM</u></b></p>

# James Dixon Preschool

Morning and Afternoon session availability

Mornings: 8.30-11.30am      Afternoons: 12.15-3.15pm

What we do:

We focus on learning through play, providing enriching play opportunities and learning experiences.



We also have learning sessions, including:

- Phonics
- Maths
- History/science/geography

We also have weekly Forest school and PE lessons.



Please scan QR code to visit our website and complete an application form.

James Dixon  
Primary



5  
COURTESY THROUGH KNOWLEDGE

# Respecting Our Neighbours



Please note that all of the parking bays on William Booth Road are private; paid for by the residents.



Help us to have positive relationships with our neighbours.



**Respect our neighbours**

**DO NOT PARK IN PRIVATE BAYS**

