



**Head of School:** Mr Kevin Minnott

**Deputy Headteacher:** Mr Robin Entwistle

James Dixon  
Primary



James Dixon Primary School, William Booth  
Road, SE20 8BW



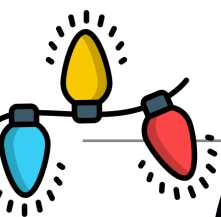
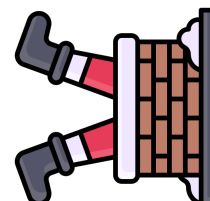
jdpooffice@swale.at



020 87786101



jamesdixon.bromley.sch.uk



# CHRISTMAS EVENTS 2025



Date	Event	Who's Involved	Cost	Other information
8th - 12th December	Food bank donations being collected for Bromley Food+	Whole school	Voluntary food donations	<ul style="list-style-type: none"> <li>We will be welcoming food and other non-perishable items to make our annual hamper donations.</li> </ul>
Tuesday 9th December	KS1 Christmas performance in the main hall at 1.30pm <b>ADVENTUROUS CLASS &amp; RESPECTFUL CLASS PARENTS ONLY</b>	Years 1 & 2	Free entry. Any cash donations are most welcome!	<ul style="list-style-type: none"> <li>A <b>maximum of two</b> parents or carers will be allowed on site. No buggies will be allowed in the hall.</li> </ul>
Wednesday 10th December	EYFS Production in the hall at 2pm	Reception children	Free entry. Any cash donations are most welcome!	<ul style="list-style-type: none"> <li>A <b>maximum of two</b> parents or carers will be allowed on site. No buggies will be allowed in the hall.</li> </ul>
Thursday 11th December	KS1 Christmas performance in the main hall at 1.30pm <b>CONFIDENT CLASS &amp; HONEST CLASS PARENTS ONLY</b>	Years 1 & 2	Free entry. Any cash donations are most welcome!	<ul style="list-style-type: none"> <li>A <b>maximum of two</b> parents or carers will be allowed on site. No buggies will be allowed in the hall.</li> </ul>
Thursday 11th December	Whole school (Years 2-6) visit to Christ Church Anerley - Wear your winter jumper! (AM)	Years 2-6	Free	<ul style="list-style-type: none"> <li>This visit takes place during the school day.</li> <li>Children must wear school uniform other than their winter jumper</li> </ul>
Friday 12th December	Children's Christmas Lunch -Wear your winter jumper!	All children	£1	<ul style="list-style-type: none"> <li>Children must wear school uniform other than their winter jumper - £1 donation to Save the Children</li> </ul>
Wednesday 17th December	CHRISTMAS PANTO: Agent Frost & The Search for Tinsel Tally	Years 1-6	Free	<ul style="list-style-type: none"> <li>This will take place during the school day</li> </ul>
Thursday 18th December	CHRISTMAS PANTO: Clumsiest Christmas Elf	Preschool & Reception	Free	<ul style="list-style-type: none"> <li>This will take place during the school day</li> </ul>
Friday 19th December	Class Christmas parties & disco	All Children	Free	<ul style="list-style-type: none"> <li>Children can come school in their own clothes ready for the disco and class parties</li> <li>Parents are welcome to donate food items for the party <b>no allergens</b></li> </ul>

## Christmas Cards

We are happy to help your child to distribute their Christmas cards however we cannot provide a list of names. We finish for our Christmas holidays on **Friday 19th December 2025 at 2.00pm** and return in the New Year on **Monday 5th January 2026 at 8.30am**.



Sustainable Travel  
Accredited & Recognised  
sustainable level



**Executive Headteacher: Mrs Michelle Aldred**

A member of Swale Academies Trust

Registered Office: Ashdown House, Johnson Road, Sittingbourne, Kent ME10 1JS

Registered in England No. 07344732